

# WARRINGAL ORCHID SOCIETY INC.



[www.warringalorchidsociety.com.au](http://www.warringalorchidsociety.com.au)

**FEBRUARY  
2024**

**PRESIDENT**  
Temp.  
Andrew Fernandez

**TREASURER**  
Alf Magnano  
0403006104

**EDITOR**  
Temp.  
George Dimech

**SECRETARY**  
George Dimech  
0411372537

**MEMBERSHIP**  
Helen Robinson

**SHOW CO-ORDINATOR**  
Jerry Karbownik  
98173699



All correspondence to be addressed to: The Secretary, 77 Carrington Blvd. Thomastown, Vic. 3074



## **Bulletin Editor**

We need a new Editor to take over the reins. If you would like to volunteer to do the job, please contact the Secretary George Dimech. Basic computer skills required and help with layout is available.

**The next Committee meeting will be at 7.30pm on Wednesday 6<sup>th</sup>. March 2024  
Venue to be decided.**

The Warringal Orchid Society meets at the Watsonia Community Hall  
35 Lambourne Road Watsonia

**The next Meeting will be on Wednesday 21<sup>st</sup>. FEBRUARY**

Hall will be open from 7.00pm you are welcome to bench plants for judging and to socialise with other members. A sales table operates with pots and other orchid accessories available. Members are able to submit up to 6 orchid plants for sale, plants to be well established in pots and in a clean condition. The society deducts a 10% commission on sales. Plants to be listed on sales form available at sales table.

**Please be seated on time for meeting to commence at 8.00pm.**

This month's speaker will be: Hendik Venter  
Hendrik's subject for talk will be : an A-Z of Orchids for beginners that everyone should grow.  
I am sure that his talk will be entertaining for both old and new members.





## **A NEW YEAR – A NEW VENUE FOR OUR MEETINGS**

We have changed the venue for our monthly meetings in 2024 they will now be held at the Watsonia Community Hall

The address is: 35 Lambourn Road Watsonia 3087

We will have our first meeting at this venue on Wednesday 21<sup>st</sup>.  
February 2024

Meeting dates and times will remain the same as previous, only the venue has changed. Ample parking is available.

## **NOTICES**

### **New growers Group**

New members wishing to get some extra instruction are welcome to join the New Growers Group conducted by Jason Khoo. This group runs for approximately 30 minutes prior to the start of the monthly meeting.

### **Monthly meeting Supper**

All members are invited to bring a plate of supper to share at the end of our meeting. We all enjoy this time, so do not leave it to the same ones every month. Help pack up prior to having supper.

### **Set- up**

Help is needed to set the hall up for our meeting. Hall is open from 6.00pm, Come early and help set-up.

### **Committee**

Due to several resignations from committee and to maintain our stability we are asking for members to join the committee. New members means new ideas. This is your society, support it and have a go.

**The position of President is still vacant. Please think about Volunteering**

**VALE:** Our condolences go out to Life Members Alex and Lenore Shephard on the recent loss of their son in law, our thoughts are with you and your family.



## 2024 Year of the Wood Dragon

Chinese New Year, also referred to as the Lunar New Year, signifies the departure of the old and the arrival of good fortune into the new year. In 2024, we celebrate the Year of the Dragon, magical, mystical, and magnificent Dragon is the most powerful sign of the Chinese zodiac. The Dragon symbolizes power, strength, and good fortune and represents royalty (the Emperor), wisdom, and prosperity. Therefore, a Dragon year brings good fortune, power, passion, and new opportunities.

The Chinese zodiac assigns each year to one of twelve animals. This tradition originates from an ancient Chinese poem that recounts 12 mythical animals descending from heaven to usher in spring and a new harvest. In 2024, we embrace the Year of the Dragon. Alongside the animal zodiac, the Chinese New Year also associates each year with one of the five elements—earth, wood, fire, metal, and water. In 2024, wood takes the center stage, making it the Year of the Wood Dragon.

To grasp the significance of each Lunar New Year, it's necessary to recognize the attributes of both the element and the animal. With wood as the element for Chinese New Year 2024, we embrace growth, success, and the initial stage of development. Wood symbolizes humanity's aspiration to achieve, progress, grow, and expand. The Year of the Dragon represents health, strength, and good fortune. Those born in this year are believed to embody qualities associated with dragons—natural leadership, charisma, and boundless enthusiasm.



## Cultivating the genus - pterostylis

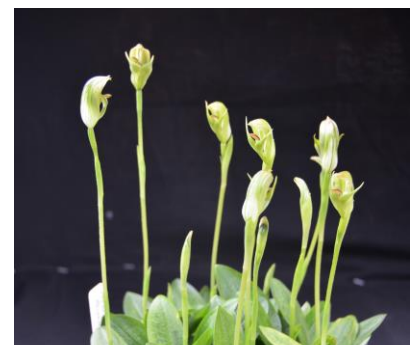
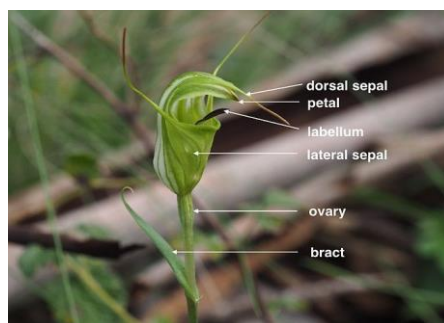
Commonly known as greenhoods, rusty hoods or maroon hoods, members of the genus *Pterostylis* seem to be the unlikeliest flowers to be called orchids, but orchids they are. There are more than 120 species in Australia, more than 60 of them in Victoria and 37 in Tasmania, although many are common to both states. A peculiar characteristic of *Pterostylis* is the fused lateral sepals that rise from the base of the flower before separating to form two tails above a dorsal sepal. Together they form a hood (botanically known as a galea) above the column and lateral sepals.

Depending upon the species, the genus *Pterostylis* can be found in nature from sea as level to alpine areas and in all types of terrain and climates. Most species have only one flower per stem but some multi-flowered species have as many 24. Although they are commonly known as greenhoods, the colour of the flowers may range from green to brown, some species having reddish brown or maroon flowers. Green is by far the most common colour, although it may vary from light to dark green, often with white or translucent stripes. Flower size may vary from quite small {e.g. *P. parviflora*) to relatively large {e.g. *P. baptistii*). All are terrestrial orchids that become deciduous each year, usually in summer.

**REPOTTING:** They grow better if repotted annually otherwise the plants crowd together around the rim of the pot. Repotting is normally done between November and January. The pots can be knocked out and the tubers examined without harm. For best results repot the tubers in half fresh soil mix. A suitable soil mix is 40% loam, 50% sand and 10% organic matter with a little blood and bone fertilizer added. (They will also grow in native potting mix.) A 5 mm sieve is a useful tool for separating tubers from soil. Replant the dormant tubers with the tops 20 mm deep. Cover the soil surface with a mulch of chopped sheoak needles (20 – 50 mm lengths). This prevents soil erosion and assists with aeration under the leaves. Greenhoods are unsuitable for indoor culture but grow happily outside under shade cloth, preferably with a wire netting cover to keep blackbirds from digging out the plants in their search for worms.

Greenhoods commence growth from a subterranean tuber, usually in late winter, in many cases producing a rosette of leaves from which the flower stem emerges. In some cases the flower stem emerges beside the leaf rosette, while in a few cases the rosette withers before the flower buds open. All species may be propagated from seed but many also develop extra tubers, and thus form large colonies. If undisturbed, ten or a dozen tubers in a six-inch pot may multiply to a crowded potful within a few years.

When grown outdoors the plants need little more water than provided by general rainfall, except in periods of drought. The plants should be kept quite dry during the dormant period. Fertiliser should be used sparingly and only when the leaf rosettes are developing.



## SHOW DATES – 2024

Winter Show : Saturday 3<sup>rd</sup> and Sunday 4<sup>th</sup> August

set-up on Friday 2<sup>nd</sup> August

Spring show: Saturday 5<sup>th</sup> And Sunday 6<sup>th</sup> October

set-up Friday 4<sup>th</sup> October

At St. Sava Community Hall 212 Diamond Creek Rd.  
Greensborough

### ALGINOX as a Disinfectant

Alginox is a liquid Swimming Pool control/sanitiser, for control of algae and bacteria in swimming pools. It has the same active ingredient as a popular, but much more expensive, orchid/plant disease control product called Physan. As far as I know, the guidelines in the table below were put together by a nurseryman on the North Coast of NSW about 20 years ago. The rates recommended are believed to be quite safe for all orchids and in fact, the experience of a few local users suggests you might even want to slightly increase the suggested rates.

**However!** As with the use of any chemical, **you should proceed with caution.** Use gloves, don't drink it or get it in your eyes, keep it away from children, etc.etc. You also never know if some plants may be more sensitive than others or if it affects in some circumstances may differ. **Usage is at your own risk.** Please read all directions on the Alginox container before using it and test on samples in your own conditions before making any decision to use more widely.

If you think Alginox might be helpful to you and you would like to try it, it is currently available in most supermarkets and hardware stores in the pool chlorine section.

### SUGGESTED RATES AND APPLICATIONS

**Usage Type** – Usage rate – Application method

**Dividing Plants** – **Usage rate:** 15ml to 4 litres of water (i.e. 3.75 ml per litre) –

**Application method:** Remove old compost, soak plant for 5 minutes before dividing with sterilised cutters. Trim the division and its roots, soak again for 5 minutes before repotting.

**Seedlings from flask. Protect from damp off –**

**Usage rate:** 7 ml to 4 litres of water (i.e. 1.75 ml per litre) – **Application method:** Soak plants including agar, in Alginox solution for 5 minutes. Remove agar, soak compost in Alginox solution. Afterwards, spray once per month or anytime disease is present.

**Adult Plants** – **Usage rate:** 50 ml to 20 litres of water (i.e. 2.5 ml per litre) –

**Application method:** Spray once a month or anytime disease is evident. Soak compost when disease is evident.

**Maintenance Dosage** (Dendrobium cut flower growers spray) – **Usage rate:** 20 ml to 20 litres of water (i.e. 1.0 ml per litre) – **Application method:** as for adult plants. Note: For specific problems such as rots or Botrytis, use the recommended dosage until under control. Then resume this maintenance dosage spray once a month.

**Disinfectant** – To kill bacteria, fungus, algae on contact - **Usage rate:** 5 ml to 1 litre of water –

**Application method:** Wipe plant sap from the cutting edge first. Submerge cutting tool in Alginox solution before using again.

**Rots such as black rot, brown rot, Erwinia etc. –**

**Usage rate:** 15 ml to 4 litres of water (i.e. 3.75 ml per litre) **Application method:** Remove compost, soak entire plant 10 minutes or more. Trim all rot from plant using sterilised cutter. Soak plant wounds 10 minutes or more. Repot using compost soaked with Alginox solution.

**Brown rots in Vandaceous orchids** – **Usage rate:** 25 ml to 10 litres of water (i.e. 2.5 ml per litre) –

**Application method:** Spray weekly during rainy periods. Ensure the solution gets in around the leaf bases. Do not omit spray because it is raining.

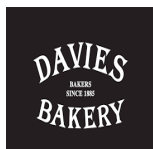
**Spraying walkways and under benches** – **Usage**

**rate:** 15 ml to 4 litres of water (i.e. 3.75 ml per litre)

**Application method:** spray heavily under benches and walkways.

**THE WARRINGAL ORCHID SOCIETY WOULD LIKE TO THANK THESE SPONSORS FOR THEIR DONATIONS**

**PLEASE SUPPORT THEM WITH YOUR CUSTOM**



Davies Bakery  
24 Military Road.  
Broadmeadows 3047  
9355 6700



Heather Brae  
53 Lipton Drive  
Thomastown 3074  
8460 4111



Bertocchi Smallgoods  
69-71 Trawalla Ave.  
Thomastown 3074  
9357 3853



Pantalica Cheese Co.  
49-65 Trawalla Ave.  
Thomastown 3074  
9359 5570



Real Estate Agents  
153 Upper Heidelberg  
Road Ivanhoe 3079  
9499 7992



Seasol International  
1027 Mountain Hwy.  
Boronia 3155  
9729 6511

If not claimed within 7 days  
Return to: 77 Carrington Blvd.  
Thomastown VIC. 3074

**DISCLAIMER**

The Warringal Orchid society Inc. disclaims all liability against any loss or damage, which may be attributed to the use of any articles in the Warringal Orchid Society Bulletin or information by guest speakers. Contributions and advice express the views and opinions of the contributors and are not those of the Warringal Orchid Society